

Assay Explorer Report Manager

For comprehensive reporting in PDF, HTML, XML, TXT, RTF, Word, and Excel formats, including graphics, chemical structures, and data from multiple databases

In today's research environment, new technologies are generating an explosion of scientific data from disparate sources. Querying this data and generating reports from it can be a lengthy and challenging process, taking time away from valuable research.

Assay Explorer Report Manager is a new tool from MDL Information Systems, Inc. that provides extensive capabilities for preparing detailed reports. Working with Assay Explorer, a biological data management system for capturing, analyzing, and registering experimental results, Assay Explorer Report Manager provides comprehensive data querying and reporting in PDF, HTML, XML, TXT, RTF, Word, and Excel formats.

Assay Explorer Report Manager is capable of including graphics and data from multiple chemical and biological databases stored in Oracle. Using customizable report templates, you can generate queries across the Assay Explorer database and other Oracle databases such as MDL's Apex, an integrated plate management system, and ISIS, MDL's Integrated Scientific Information System.

An Integral Tool for Biology Experiment Management

Assay Explorer Report Manager is part of a suite of integrated tools from MDL for biology experiment management. From creating and tracking plates with Apex, through recording biological experiment results alongside chemical data in ChemBio, MDL products enable organizations to efficiently utilize information and manage biological research. The Assay Explorer Report Manager provides a simple, integrated means to share critical research findings with team members via polished, comprehensive reports.

Benefits for Researchers

Assay Explorer Report Manager is a fully featured reporting tool for presenting chemical and biological information. Assay Explorer Report Manager enables you to:

- **Report on single or multiple experiments captured in Assay Explorer** With Assay Explorer, you can seamlessly import, analyze, and capture your experiment. Using the Assay Explorer Report Manager, you are then able to instantly report the data in a variety of formats based on customizable templates. Not only can Assay Explorer Report Manager query details of single experiments within Assay Explorer, it can report data from

multiple experiments across the entire Assay Explorer database, such as the results from a primary and secondary screen, without the need to cut and paste information. Assay Explorer Report Manager can generate summaries for specific samples or SAR tables.

- **Use flexible query tools for reporting** Assay Explorer Report Manager gives you the ability to build complex queries for data in Assay Explorer's database and quickly retrieve the data for easy analysis and decision-making.
- **Integrate with ISIS databases** The ability to link to ISIS chemical databases

enables you to integrate chemical data and structures into the report without the need to cut and paste or manually search for chemical data through other applications.

- **Generate graphics dynamically** A wide range of graphing features from 3D scattergrams to pie charts enables you to dynamically create graphs of reported data.
- **Use reporting wizards, templates, and formats** An active report displays pop-up menus, enabling you to specify

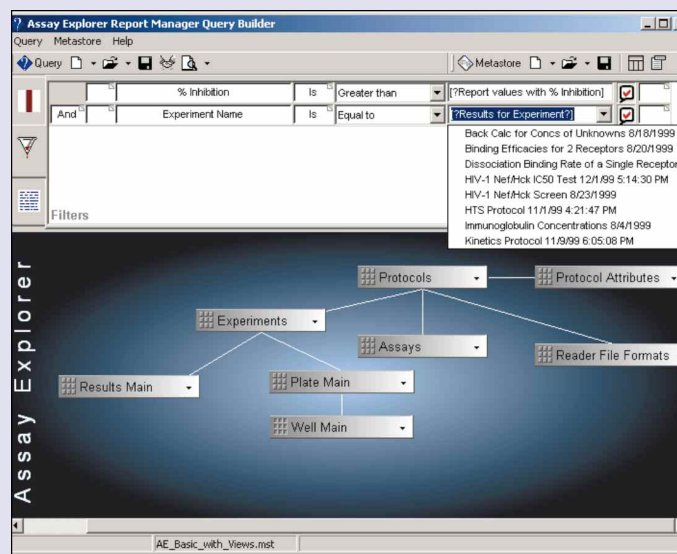


Figure 1: Complex queries include data filters that provide dynamic user prompts and can be used to create a wide variety of reports.

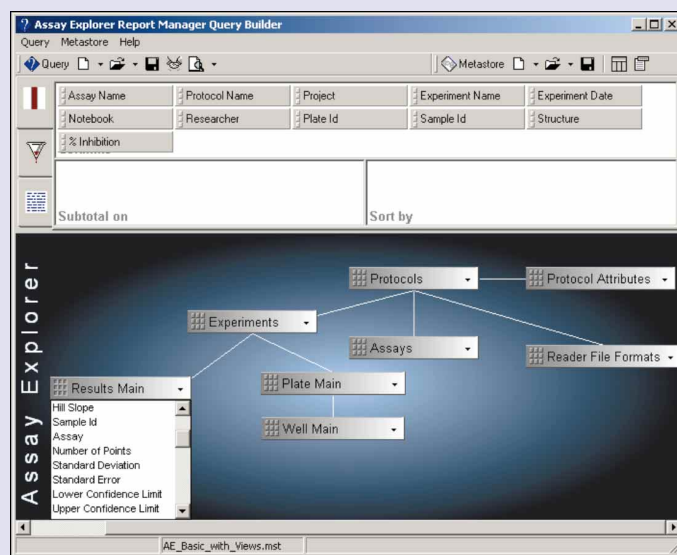


Figure 2: An intuitive GUI allows administrators to define connectivity among multiple databases enabling users to quickly and easily create complex queries.

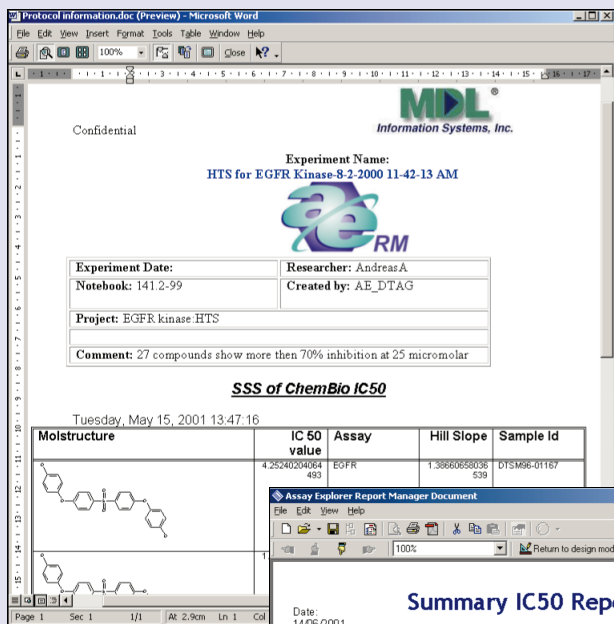


Figure 3: Microsoft Word templates allow users to create reports based on corporate standards and templates.

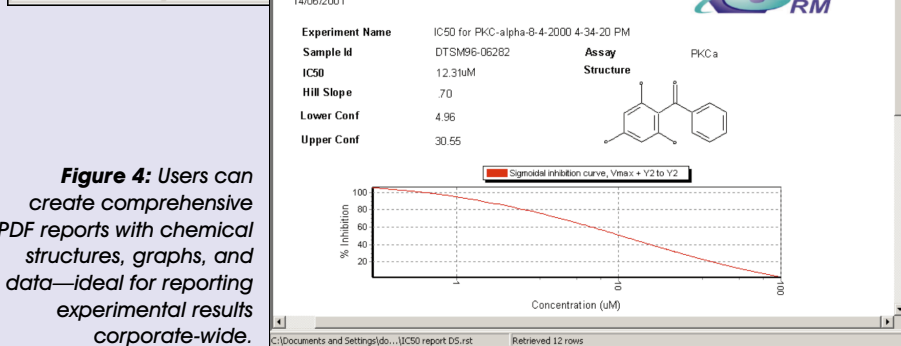


Figure 4: Users can create comprehensive PDF reports with chemical structures, graphs, and data—ideal for reporting experimental results corporate-wide.

additional filter information, such as experiment name, sample ID, and dates. Assay Explorer Report Manager's reporting templates enable you to quickly generate reports, and the PDF, XML, TXT, RTF, Excel, Word, and HTML reporting formats give you the ability to meet specific reporting needs. For example, you can produce complex Word and Excel reports for daily reporting and editing, while you may want to produce PDF reports for summarizing experiments, sharing data with others, and entering information into lab notebooks.

- **Report from multiple databases** When you need to access data from different databases for reporting, Assay Explorer Report Manager saves you valuable time by giving you the ability to link to the Assay Explorer databases as well as to other chemical and biological databases in Oracle format. There is no need to search each database independently. For example, you could simultaneously link to databases for biology, plate management, chemistry, and chemical analysis—drawing all the information into one report.
- **Connect to ODBC and ADO databases** Using common connection types such as Oracle connection protocols and industry

standard protocols, you can connect to a range of databases and database types.

System Requirements

Software Requirements: Assay Explorer 1.1 or higher, Microsoft Office 97 or higher

Operating Systems: Windows 98, Windows 2000, or Windows NT

CPU: Pentium333 MHz or higher

RAM: 128MB or higher

Disk Space: 30 MB minimum

Database: Oracle 8.0.6 or above

Display: 800 x 600 pixels minimum, 1024 x 768 recommended

About MDL

MDL Information Systems ("MDL") is the recognized leader in discovery informatics for the life sciences and chemistry in industry and academia. MDL software, content, and services provide the enterprise-wide discovery informatics framework for comprehensive and successful discovery research. We are an international business headquartered in San Leandro, CA, with offices worldwide. MDL Information Systems, Inc. is a wholly owned subsidiary of Elsevier Science, Inc.

U.S.A.

World Headquarters & Western Sales

14600 Catalina Street
San Leandro, CA 94577
TEL: (510) 895-1313
FAX: (510) 483-4738
www.mdl.com

Eastern Sales

163 Madison Avenue, 4th Floor
P. O. Box 1937
Morristown, NJ 07960
TEL: (800) 401-4321
(973) 292-3684
FAX: (973) 734-1792

Europe

Headquarters

MDL Information Systems AG
Gewerbestrasse 12
CH-4123 Allschwil 2
Switzerland
TEL: +41 61-486-88-88
FAX: +41 61-486-88-89

Cologne Office

TEL: +49 221-16025-255
FAX: +49 221-16025-68

Authorized Agent Scandinavia

Oslo Office
TEL: +47-22-44575-6
FAX: +47-22-43416-6

Paris Office

TEL: +33 1-45 36 80 00
FAX: +33 1-45 36 80 01

MDL GmbH

MDL Information Systems GmbH
Theodor-Heuss-Allee 108
D-60486 Frankfurt, Germany
TEL: +49-69-5050 4242
FAX: +49-69-5050 4245

United Kingdom

Headquarters

MDL Information Systems (UK) Limited
Norwich House
Knoll Road
Camberley
Surrey GU15 3PR
England
TEL: +44 (0)1276 701500
FAX: +44 (0)1276 701501

Japan

MDL Information Systems Japan K.K.
Kojimachi M Bldg., 3F
3-12-12 Kojimachi
Chiyoda-ku
Tokyo 102-0083
Japan
TEL: +81-3-3230-2641
FAX: +81-3-3230-2761

MDL and Assay Explorer are registered trademarks in the United States and Apex and ISIS are trademarks of MDL Information Systems, Inc. Microsoft is a registered trademark of the Microsoft Corporation in the United States and other countries. Oracle is a registered trademark of the Oracle Corporation. All other product names or company names may be trademarks or registered trademarks of their respective holders, in the United States and other countries.